

The Tuscan experience in urban planning: PIUSS - Integrated Plans for Sustainable Urban Development

Porto, 4th December 2009

What are the PIUSS?

Definition and purpose

- **coordinated set of public and private interventions** aimed at implementing – in terms of sustainability - objectives for socio-economic development through the improvement of urban and environmental quality and a rational use of urban space
- **integrated and cross-cutting approach** to different types of operations/interventions
- **tool for local economic development and urban regeneration**, which operates through recovery, upgrading, conversion and enhancement of existing urban heritage (new constructions only in case of completion and integration of existing urban complexes)
- **an instrument to implement policies** for economic and social development in urban areas as outlined in the V Priority Axis of the Regional OP POR CREO in line with the content of the Regional Development Plan and the Territorial Action Plan (PIT)

The urban dimension in the Tuscan Operational Programme ERDF 2007-2013 POR CRoO/FESR

Priority Axes	Intensity of intervention in urban areas	Esteemed ERDF co-financing in urban areas (Meuro)
I – R&D, innovation, entrepreneurship	partially but predominantly	110.2
II – Environmental sustainability	partially	12.1
III - Competitiveness and sustainability of energy production	partially	7.9
IV - Transport services and accessibility	partially	60.4
V – Enhance sustainable territorial development	partially but predominantly	44.8
TOTAL (out of 338.4 Meuro ERDF co-financing at programme level)		235.4
% on TOTAL ERDF		69.6%

PIUSS Content

- **The lines of interventions for infrastructure**
 - 1 - **Infrastructure for economic development:** business services centres, centres of competence SMEs, infrastructure for industrial areas and high-tech service industry
 - 2 - **Infrastructure for tourism and trade:** spas, yachting, exhibition and congress centres, market areas
 - 3 - **Centres for the safeguarding of social citizenship rights :** day care for at-risk people, centres carrying out activities providing support to disadvantaged people, hospitality centres aimed at fostering interculturality
 - 4 - Structures for **kindergartens/nursery schools** and other additional services for the early childhood
 - 5 - Interventions for the protection, value-enhancement and promotion of **cultural heritage** in urban contexts
- **Territorial Marketing: activities for the promotion and exploitation**

Phases of PIUSS planning

13th June 2008: launch of the call for proposals addressed to Tuscan Municipalities with more than 20,000 residents

- **133,6 million €:** the available resources under the RO programme 2007/2013 (45 Meuro ERDF)

10th March 2009 (9 months): deadline for submitting proposals

- **17 proposals** submitted to the Regional Body
- **21 Tuscan Municipalities** involved
- **323 projects** totally

PIUSS evaluation process

23rd March 2009

The Evaluation Committee at regional level was set up

30th September 2009

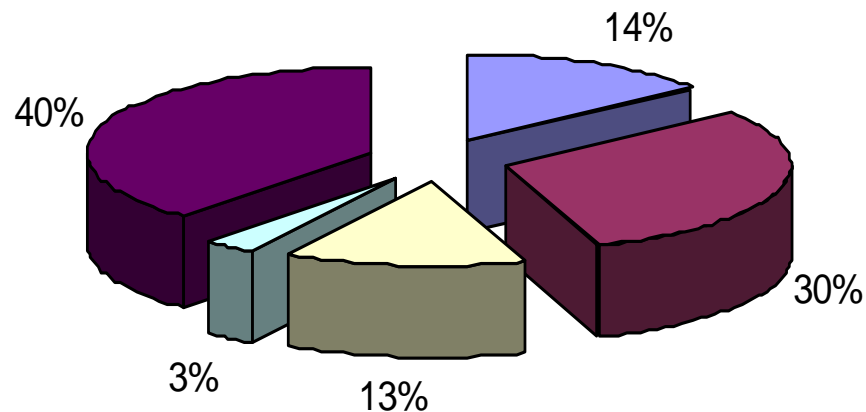
After 6 months the Evaluation Committee completed the assessing process by indicating an order of merit of the submitted PIUSS

The figures of Tuscan PIUSS after the evaluation process

- > 280 eligible projects (out of 323 submitted projects)
 - 100 projects for infrastructure for tourism and trade
 - 82 projects for infrastructure for culture
 - 26 projects for infrastructures for economic development
 - 56 projects for social infrastructure
 - 16 projects for infrastructure for childhood
- > 43 not eligible projects
- > 16 eligible PIUSS (out of 17 submitted proposals)
- > 548,6 mil.€: overall eligible cost
- > 304,4 mil.€: co-financing required
- > 133,6 mil.€: funds available under the ROP 2007/20013 (45 ERDF)
- > 121 projects: funded with the available resources

The level of integration

Overall eligible cost: % per type of infrastructure



- Infrastructure for economic development
- Infrastructure for tourism and commerce
- Social Infrastructure
- Infrastructure for early childhood
- Infrastructure for culture

PIUSS location

Legenda Provinces

MS = Massa-Carrara 1

LU = Lucca 2

PT = Pistoia 3

PO = Prato 1

FI = Florence 1

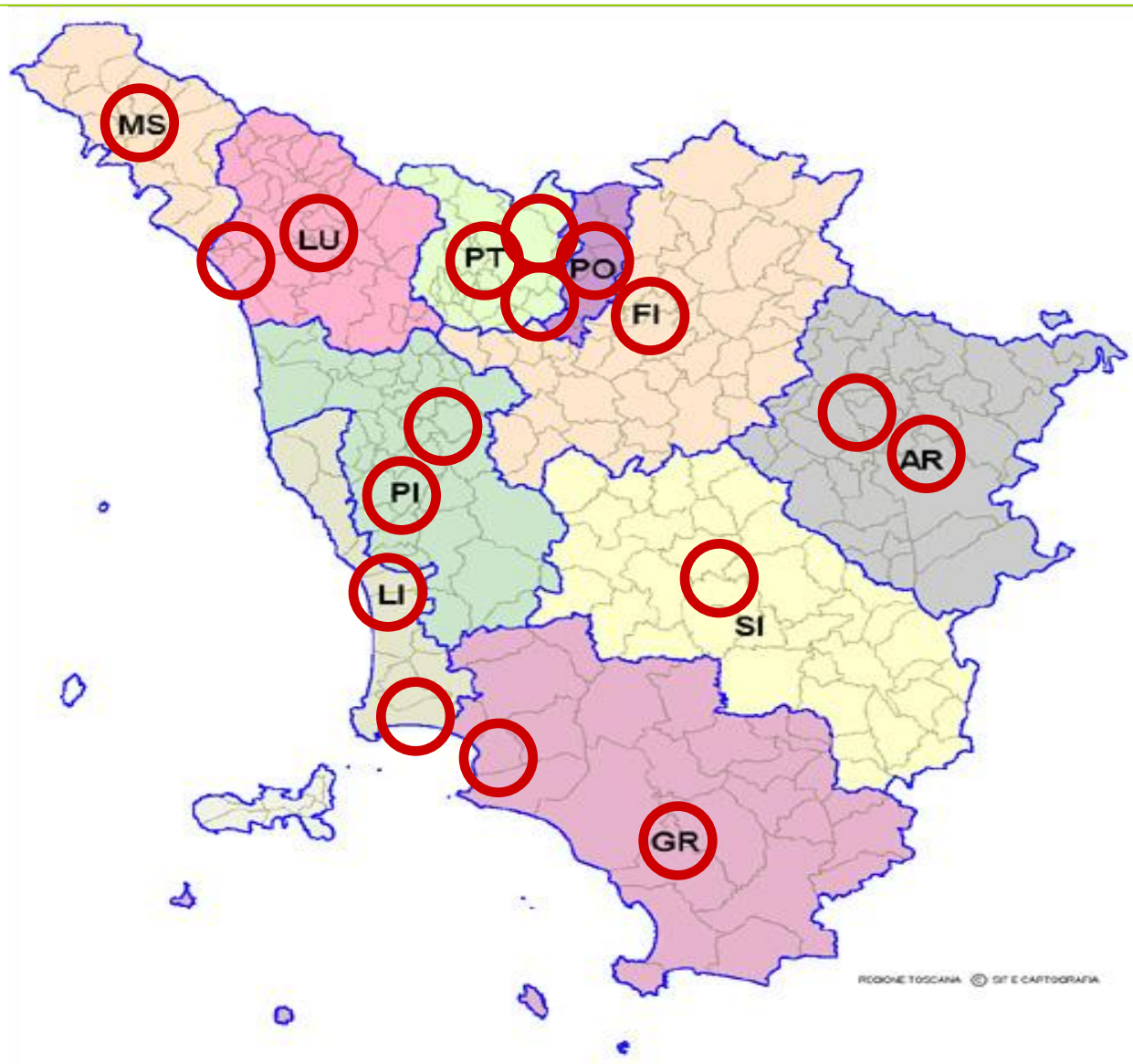
AR = Arezzo 2

SI = Siena 1

GR = Grosseto 1

LI = Livorno 2

PI = Pisa 2



2 case studies

1. “Lucca dentro” (Lucca within)
2. “Piombino 2015: Progetto Città Futura”
(Future City Project)



Lucca Identity Card

Area

Total 185.4 km² (71.6 sq mi)

Elevation 19 m (62 ft)

Population (30 April 2009)

Total 87,000 residents

Density 469.2/km² (1,215/ sq mi)

The figures of Lucca plan

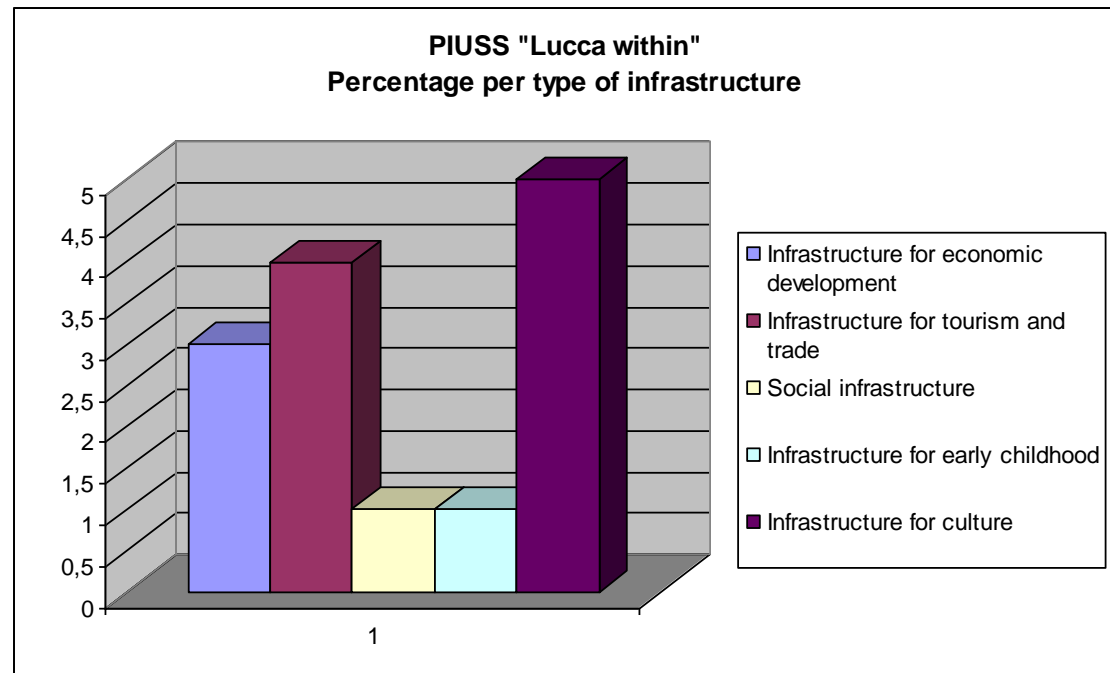
“Lucca dentro” (Lucca within)

14 projects

49,8 million Euro: the overall cost of the plan

48,5 million Euro: the overall eligible cost

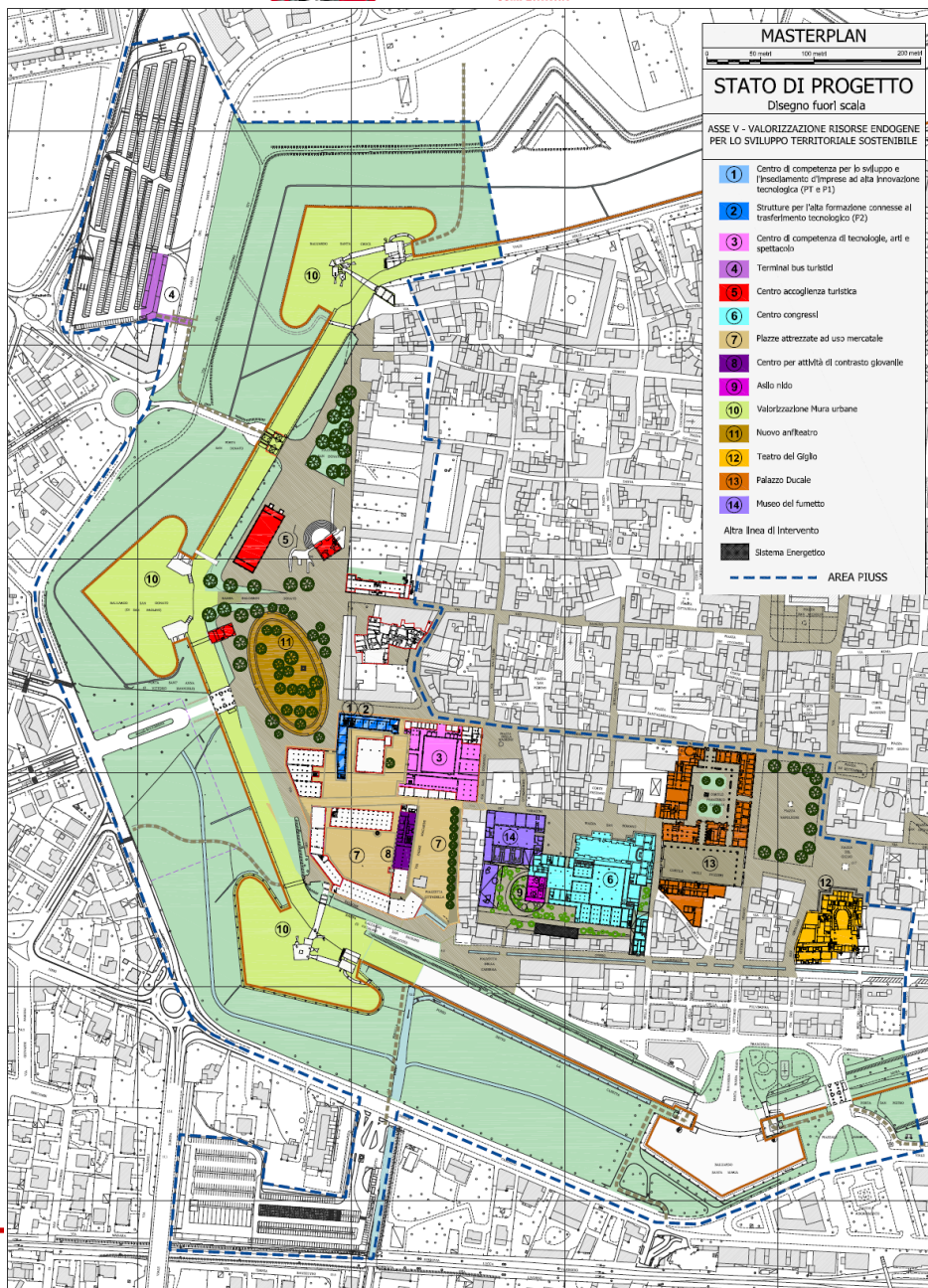
28,9 million Euro: the contribution required

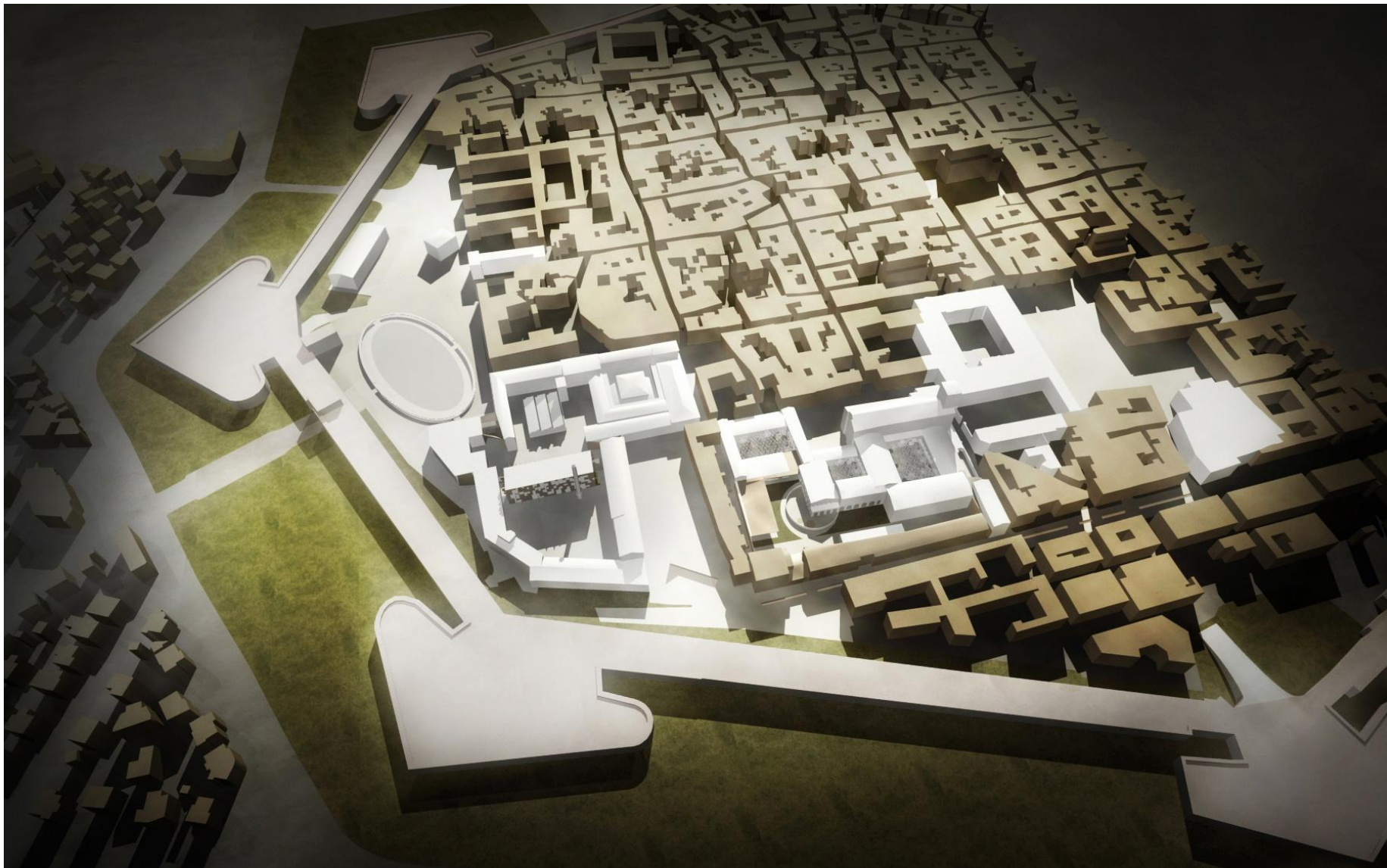


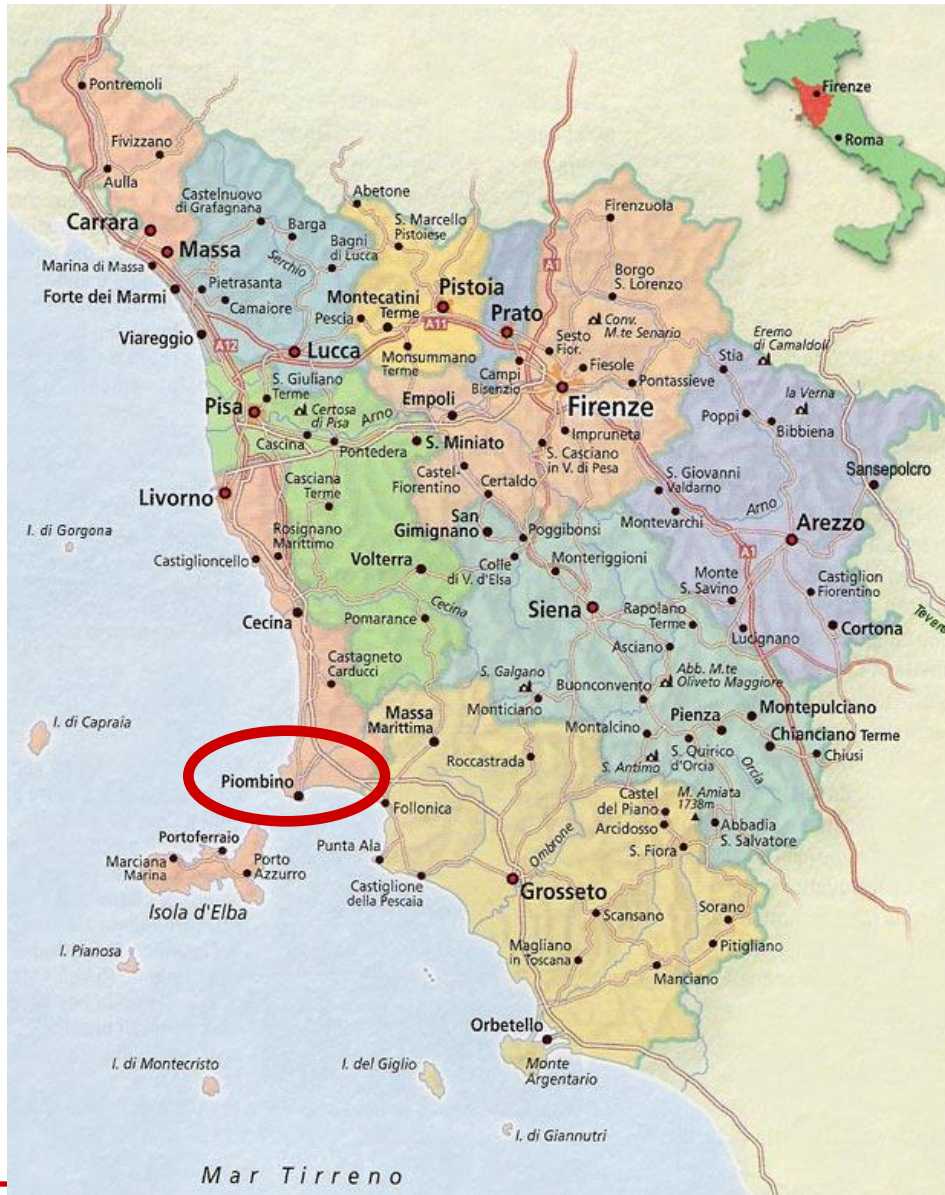
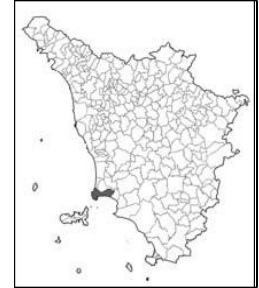
An aerial view











Piombino Identity Card

Area

Total 130.46 km² (50 sq mi)

Elevation 21 m (69 ft)

Population (30 April 2009)

Total 35,000 residents

Density 268.2/km² (700/sq mi)

The figures of Piombino plan

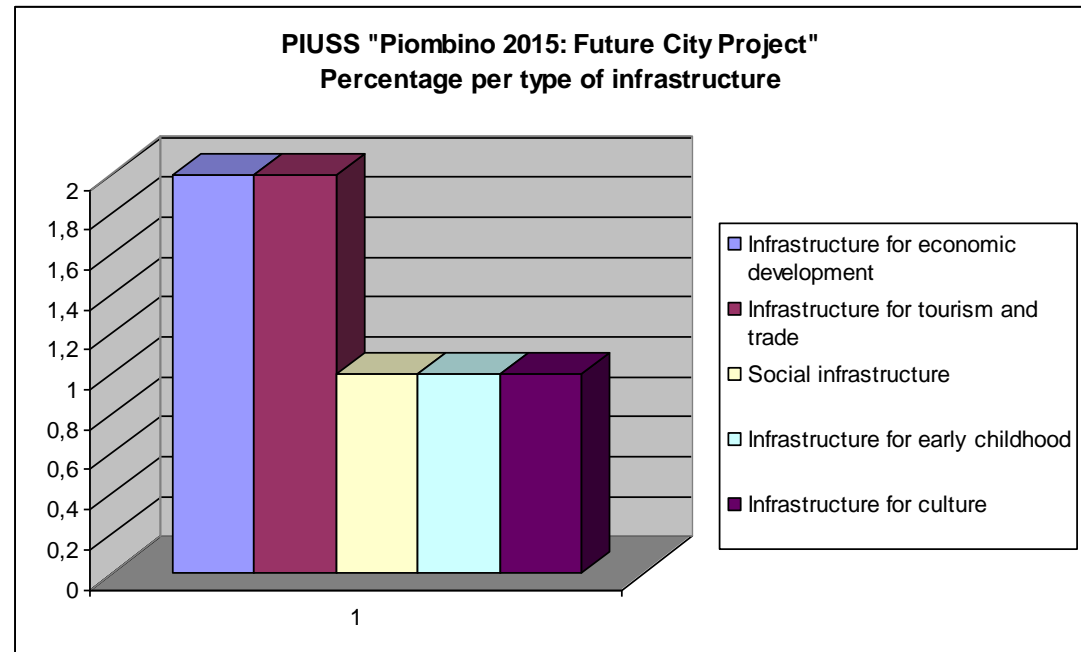
“Piombino 2015: Progetto Città Futura” (Future City Project)

7 projects

40,2 million Euro: the overall cost of the plan

38,4 million Euro: the overall eligible cost

21,7 million Euro: the contribution required



An aerial view







COMUNE DI PIOMBINO

PIUSS Piano Integrato di Sviluppo Urbano Sostenibile

STATO ATTUALE E STATO MODIFICATO DELL'AMBITO D'INTERVENTO

REGIONE TOSCANA

Asse V del POR CREO FESR 2007-2013



COMUNE DI PIOMBINO



SINDACO
Gianni Anselmi

ASSESSORE ALL'URBANISTICA
Luciano Francardi

GRUPPO INTERSETTORIALE

SETTORE URBANISTICA
arch. Camilla Gennari Perini, arch. Alessandro Favilli, arch. Laura Pesci, arch. Salvatore Gesso.
SETTORE LAVORO
ing. Claudio Sarti, ing. Martina Alagna, ing. Matteo Caramante, arch. Raffaele Piras.

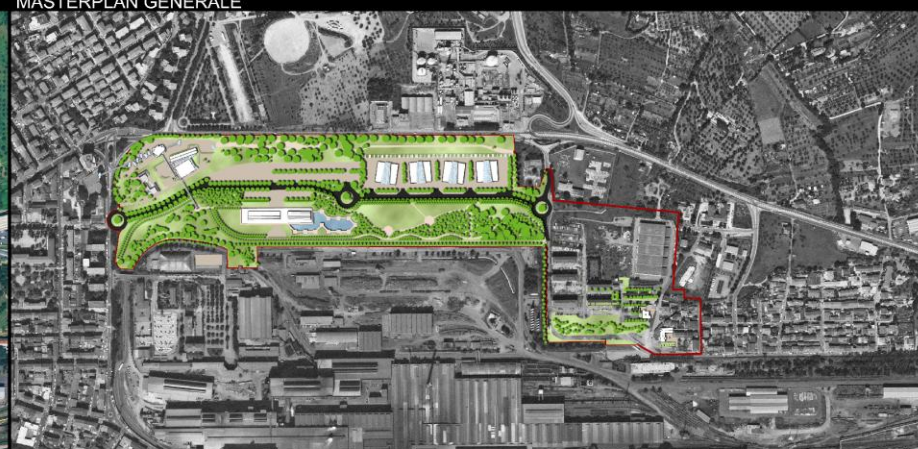
SETTORE RAGIONERIA

dot. Nicola Montecchi, geom. Cesare Gatti.
SETTORE SERVIZI GENERALI
dot. Maurizio Poli.
COMUNICAZIONE - FINANZIAMENTI COMUNITARI
dot.ssa Antonella Remuzzi, dot.ssa Monica Perini.

ASSISTENZA TECNICA AT MUSA - ASSET S&I - EPF SPA



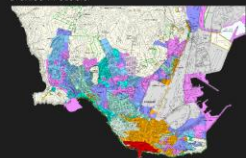
MASTERPLAN GENERALE



STRALCIO TAV 6.2 P DEL P.S. D'AREA
EVOLUZIONE STORICA DEGLI INSEDIAMENTI



STRALCIO TAV 6.3 P DEL P.S. D'AREA
ARTICOLAZIONE DEGLI INSEDIAMENTI PER CARATTERI
STORICI TIPOLOGICI



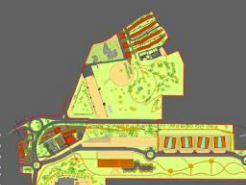
MASTERPLAN



SDF STU CITTÀ FUTURA



PIANO PARTICOLAREGGIATO
MASTERPLAN



STRUMENTI ATTUATIVI

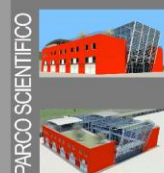


LINEA DI INTERVENTO 5.1 a - 5.1 b - 5.2
Progettazione preliminare:
prof. arch. Massimo Pirelli (coord. archit.)
arch. Stefano Mancuso
arch. Leonardo Bongini



RECUPERO EDIFICIO EX SIVIERE

LINEA DI INTERVENTO 5.1 a - 5.1 d
Progettazione preliminare:
prof. arch. Marco Saba



POLO TECNOLOGICO DEL PARCO SCIENTIFICO

LINEA DI INTERVENTO 5.1 a
Progettazione preliminare:
ing. Claudio Sarti



CENTRO CIVICO
MERCATO RIONALE

LINEA DI INTERVENTO 5.1 a
Progettazione preliminare:
arch. Antonio Camilla
ing. Venerio Calabrese



PARCO DELLA MUSICA E DELLA DANZA

LINEA DI INTERVENTO 5.1 b - 5.2
Progettazione preliminare:
arch. Antonio Camilla



PARCO DEL FERRO E DELL'ACCIAIO



PLANIMETRIA DEL PARCO DEL FERRO E DELL'ACCIAIO

Thank you for your attention

www.regione.toscana.it/creo

piuss@regione.toscana.it

jessicaforcities@regione.toscana.it